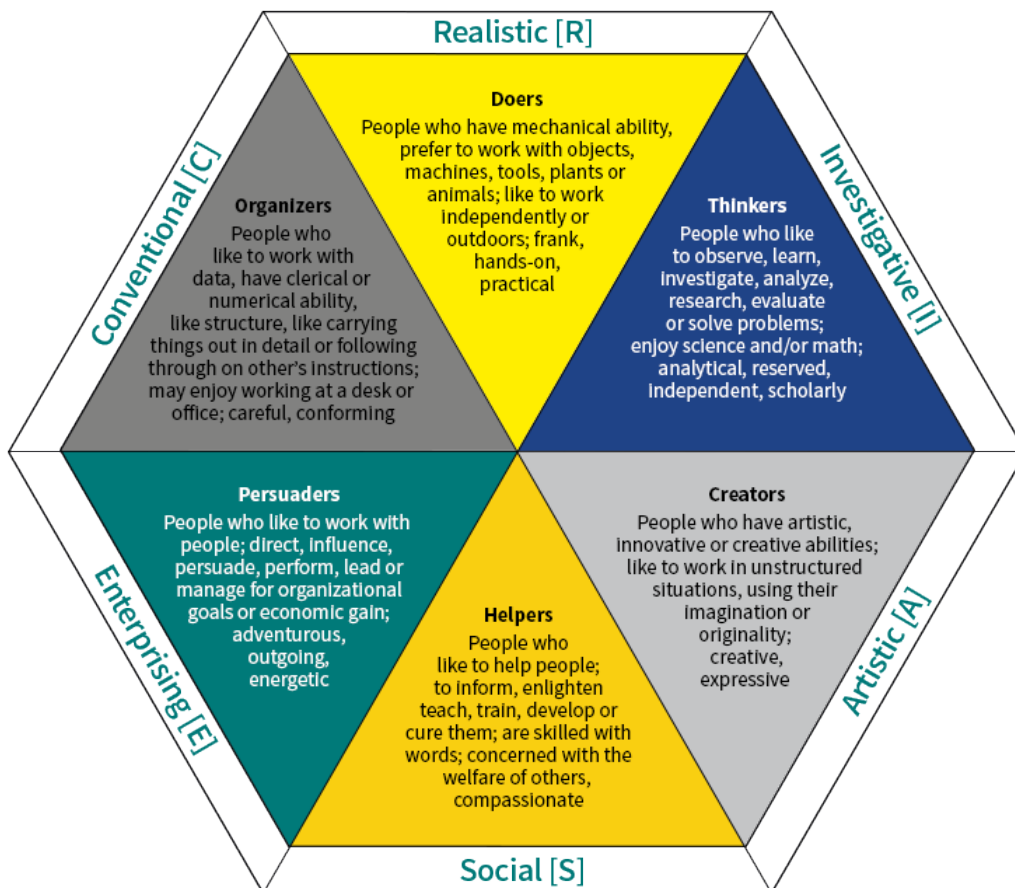


Holland Career Model

The Holland Career Model is a brief assessment of your personality and interests that you can use to find careers that may be a fit for you.

STEP 1 Use the chart below to identify your traits/interests.



What are your top three letters? Enter the top three traits below (indicate letter) that you most identify with in the chart above.

1st Choice

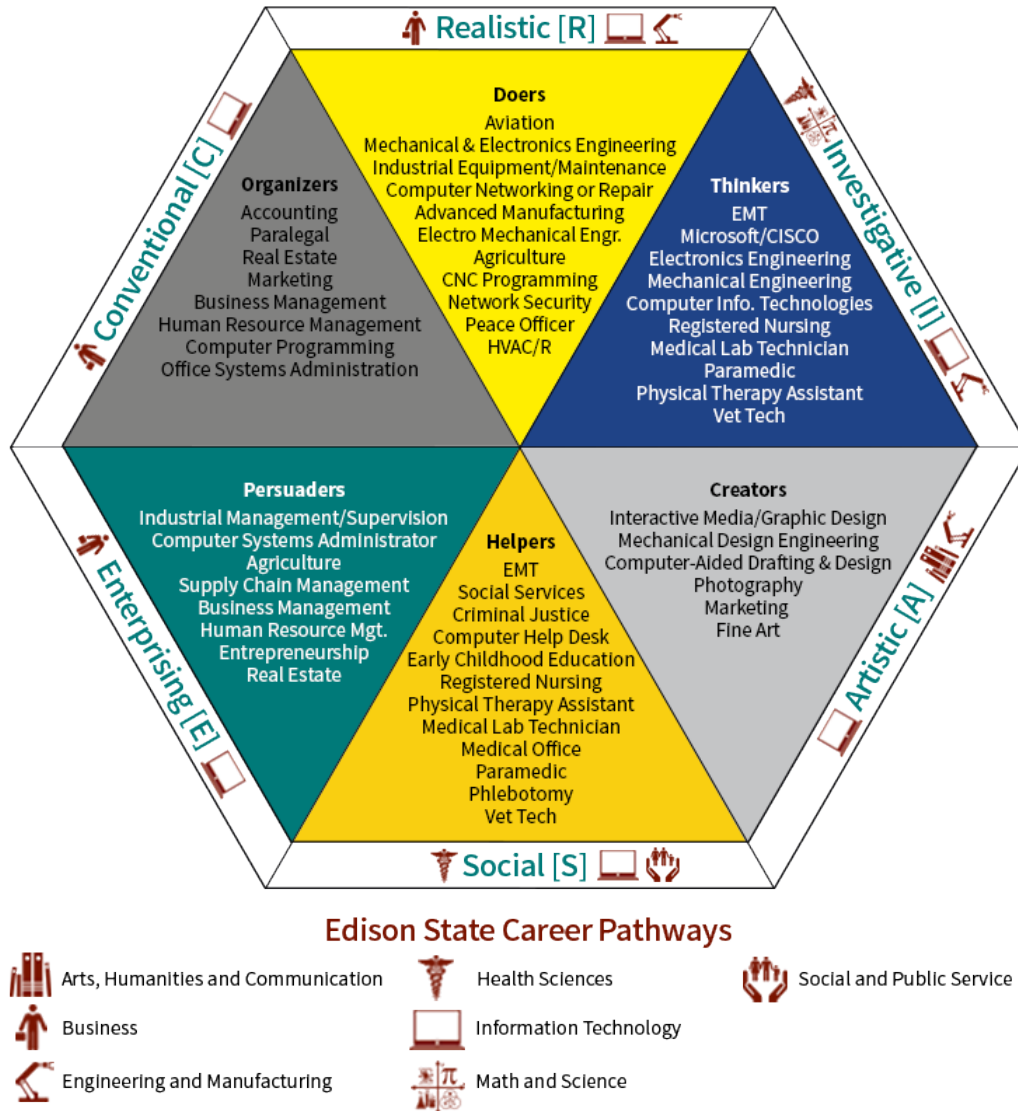
2nd Choice

3rd Choice

This is your Holland Code The Holland Code then matches to job interest clusters, work personality environments or personality types. The Holland Codes are

- Realistic (R)** Realistic types are practical, "hands on," and like to work with things, machines or equipment.
- Investigative (I)** Investigative types like to work with ideas and problem-solving. They tend to be analytical, intellectual and enjoy math and/or science.
- Artistic (A)** Artistic types tend to be independent, expressive and creative. They enjoy using their imagination and creative expression in areas such as art, music, drama or writing.
- Social (S)** Social types prefer to deal with people and enjoy helping, informing, teaching, inspiring, counseling or serving.
- Enterprising (E)** Enterprising types tend to be persuasive, energetic, sociable, adventurous, ambitious and risk-taking. They enjoy leading, managing and organizing.
- Conventional (C)** Conventional types prefer to deal with data and things. They tend to be careful, conforming, conservative, conscientious, structured and pay attention to details. They often enjoy an office environment.

STEP 2 Now that you have your results, explore the Edison State career pathways/majors below that match your Holland Code. **Remember to look at all of the themes in your code.** For example, if your theme is SEC, you should look at programs in Social, Enterprising and Conventional. *Additional ideas can be found below.*



CONVENTIONAL General office work, data entry, economist, banking, billing clerk, budget analyst, computer or business teacher, postal service worker, proofreader, reservations agent, tax preparer, insurance worker, court reporter, medical transcriptionist and more.

ENTERPRISING Manager or supervisor, entrepreneur, inspector, auctioneer, appraiser, arbitrator, athletic director, attorney, banker, education administrator, funeral director, government official, financial institution manager, financial planner, management analyst, politician, real estate agent, sales or sales management, foreign service officer, golf club manager and more.

SOCIAL Teacher, coach, athletic trainer, health sciences, dietician, deaf interpreter, judge, librarian, banker, personal or home care aide, social & community service manager, social worker, speech pathologist, translator, border patrol agent, counselor/psychologist, hospitality/hotel management, customer service, religious vocations and more.

ARTISTIC Marketing, advertising, architect, commercial art/graphic design, industrial design, creative writer, critic, curator, dancer, decorator, director, editor, journalist, entertainer, exhibit designer, video game design, art, music or dance therapy, model, fashion designer, floral designer, landscape architect, illustrator, photographer, singer, travel guide, producer and more.

INVESTIGATIVE Other health science, including doctor, dentist, psychiatrist, veterinarian, audiologist, optometrist, lab scientist, chemist, biologist, forensic science technician, mathematician, pharmacist, psychologist, science teacher, zoologist, anthropologist, chiropractor, meteorologist, botanist, research analyst, oceanographer, geologist, astronomer, physicist, librarian, historian and more.

REALISTIC Skilled trades such as carpenter, electrician, plumber, cook or chef, drafter, firefighter, HVAC, machine operator, sound technician, industrial arts teacher, truck driver, radiology tech, equipment repair, renewable energy technician, turf or golf course management, pilot, dental hygienist/assistant, landscaping, tree surgeon and more.